



SCAN

342 North Main Street ■ West Hartford, CT 06117-2507

Vol. XII, Quarter 4, 2006

Pediatrics to Geriatrics: The Continuum of Care

The ISCD Annual Meeting is the largest gathering of thought leaders in the field of bone densitometry across the country and around the world.

Thought provoking session topics will include:

- Absolute Fracture Risk: NOF and WHO update
- Long-Term Safety of Bisphosphonates
- Pediatric Bone Metabolism/Update
- Role of Hormonal Therapy: Controversy of Estrogen Therapy
- Emerging Therapy: Update on Current Therapy
- Renal Bone Disease
- Peripheral Update
- DXA Reimbursement Issues
- Facility Accreditation

Ask the Expert

We invite you to submit questions and cases to the speakers to help make the advanced software lectures and hands-on workshops most useful to you. See article on page 2 for details.



Meeting Highlights

- Hands-On Workshops
- Advanced Bone Densitometry Sessions
- Meet the Professor Sessions
- Bone Head Jeopardy
- Evening Symposia

Registration is now open online at www.ISCD.org

ISCD Web Site
www.ISCD.org

Membership Directory
Certification Registry
Regional Rep. System
Upcoming Courses
& MORE



ONLINE INFORMATION

Official Positions & Advocacy

- Official Position text, slideshow downloads and related documents
- Public Policy current issues and updates
- Legislative Alerts – proposed legislation and calls to action for densitometry professionals
- Regulatory Alerts – information on current regulatory issues affecting densitometry practice
- ISCD Funded Research – grant opportunities from ISCD

Resources

- Calculating Tools (downloads)
- Frequently Asked Questions

www.ISCD.org

What's Inside...

Annual Meeting	2
From the President	3
Facility Accreditation	4
Public Policy Issues	5
Education	6
Calendar of Events	7
Membership	8
JCD Online	9
Certification	10
Contacts	11

Annual Meeting

Ask the Expert: Annual Meeting Hands-On Workshop

The 2007 Annual Meeting will include some new sessions that will be interactive in nature. As you may know, advanced software lectures and hands-on workshops are scheduled for the 2007 Annual Meeting. We invite you to submit questions and cases to the speakers to help make these presentations most useful to you.

Please e-mail DXA-related questions and/or interesting or challenging clinical cases to asktheexpert@ISCD.org. You will not be sent a direct response to your e-mail, rather, these will be forwarded to the appropriate presenter to be considered for inclusion in their presentation. Your participation will help us better meet the membership needs at the meeting. General questions about how to use software, access or apply features and scan acquisition or analysis will be reviewed by the advanced software speakers. Specific cases will be separated by manufacturer and reviewed by the workshop leaders. Cases selected for workshops will be loaded onto computers and attendees will be able to apply analysis techniques during the workshop, so please send actual unidentifiable patient files. The cases you send must comply with HIPAA guidelines. Instructions on how to ensure files are HIPAA compliant can be found on the ISCD Annual Meeting Web site, www.ISCD.org.

We appreciate your participation and hope your input will improve the 2007 meeting.

See you in Tampa!

Annual Meeting Co-Chairs
João Lindolfo C. Borges, MD
Diane C. Krueger, BS, CDT
Carol Zapalowski, MD, PhD

Call for 2007 Award Nominations

Each year at the ISCD's Annual Meeting, ISCD members are recognized for their service to the ISCD and to the field of densitometry. The Award nomination is available online at www.ISCD.org. The deadline for nominations is January 22, 2007. Contact Martin Rotblatt (mrotblatt@iscd.org) with any questions.

The ISCD Awards Committee is seeking nominations for the following:

Dr. Paul D. Miller ISCD Service Award

Presented annually to an ISCD member for distinguished service and dedication to the ISCD. First presented in 1999.

Dr. John P. Bilezikian ISCD Global Leadership Award

Presented to an ISCD member for distinguished service and leadership in the global promotion of the field of bone densitometry and the ISCD. First presented in 2006.

Dr. Oscar S. Gluck ISCD Humanitarian Award

Presented to an ISCD member with a history of contributing to the alleviation of human suffering, protection of life, outstanding service to the community, or the promotion of health in underserved populations — with no expectation of compensation. First presented in 2005.

ISCD Clinician of the Year Award

Presented annually to an outstanding ISCD clinician for distinguished service to the field of densitometry in the areas of publication, education or leadership. First presented in 1996.

ISCD Technologist of the Year Award

Presented annually to an outstanding ISCD technologist for distinguished service to the field of densitometry in the areas of publication, education or leadership. First presented in 1996.

ISCD Super Tech Award

Awarded to the best ISCD technologists based on their contribution to the practice of densitometry. First presented in 2001.

Thank You to Our Editors

A huge thank you to **Larry Jankowski, CDT** and **Kathy Diemer, MD, CCD**, our outgoing SCAN® Co-Editors, who have served in this capacity the last three years. These individuals have coordinated the educational content of the newsletter in addition to contributing articles themselves. A huge thanks to Larry for all the Tech Tip articles he has written over the years. We hope he continues to contribute more of these interesting and helpful articles in years to come. Larry and Kathy also worked with staff to develop a new look for SCAN®, which was put in place this past year.

Welcome to our incoming editors, **Sue Natrass, PhD** and **Lorna Cole, CDT**.

Trading Post & Career Listings

**Wanted any GE Lunar PIXI and PIXImus units.
Contact Don Settergren for independent service,
support and resale. 608.698.2663
don@piximus.com**

Quality and Access



I am sure that many of you have been following the recent developments surrounding DXA reimbursement in the office setting with interest and some trepidation. As such, I would like to take a moment to summarize the current situation and share with you the ISCD plans for going forward. The bottom line, as I see it, is that patient access to high-quality bone mass measurement will be severely compromised if the Centers for Medicare & Medicaid Services (CMS) reimbursement plan is implemented. We must not allow this to happen.

I begin with a very brief update on central DXA reimbursement changes scheduled to take effect over the next four years. The initial implementation will begin January 1, 2007, at which time we estimate that DXA reimbursement will be reduced to ~\$82. Subsequently, DXA reimbursement will be incrementally reduced on a yearly basis until the final cuts are implemented in 2010, at which time a ~75% cut will have been implemented (from ~\$139 to ~\$35).

As reviewed in prior communications, there are two separate initiatives contributing to this reduction. The first is a result of **changes by CMS to the relative value units of DXA as part of their periodic 5-year review of the Medicare Physician Fee Schedule (MPFS)**. This resulted in a one-third drop in the physician work component and a marked decline (of 75%) in the Practice Expense (PE) component for central DXA. The second is the **Deficit Reduction Act** (specifically Section 5102) passed by Congress in February of this year. Under this provision, Medicare payment for the technical component of an imaging service would be set at the Hospital Outpatient Department (HOPD) rate (also referred to as the Outpatient Prospective Payment System or OPSS) if it is lower than the MPFS payment rate. This will impact DXA for 2007 and 2008. Instead of a 25% drop due to the MPFS, DXA will see a 40% decline beginning January 1.

What effect will this have on physicians in the office setting? The ISCD has performed an analysis of operating costs per DXA study and paired this with the results of an ISCD sponsored clinical society survey in collaboration with the American Association of Clinical Endocrinologists, the American College of Rheumatology, the American Society of Bone and Mineral Research, The Endocrine Society and the North American Menopause Society. Based on these results, it appears that as of January 1, 2007, only those clinics performing at least 90 DXA studies per machine each month will be able to cover their operating costs. At this level of reimbursement, the additional time and money spent on physician and technologist quality improvement may disappear. In 2010, when DXA reimbursement is scheduled to fall to ~\$35, a clinic would need to perform over 2,000 studies a month to cover operating costs! These numbers seem likely to force most physicians in a non-hospital practice setting to give up DXA testing. As approximately two-thirds of densitometers are currently located in the non-hospital setting, access to care will be profoundly restricted. Patient care seems destined to suffer with a consequent increase in osteoporotic fractures.

As outlined in prior communications, the ISCD, working in collaboration with our sister clinical societies, has pursued a variety of initiatives in an effort to overturn these proposed cuts. Unfortunately, these actions have not yet led to substantive changes in the CMS final rule and the MPFS. However, on a positive note, CMS will be phasing in the reductions over the next four years *"to give specialties and practitioners the opportunity to work with us to determine whether any changes in our payment calculation for such services is warranted and we are open to further discussion on this issue."* The first steps to potentially reverse the reductions in DXA reimbursement have already taken place. In response to the outcry from patient advocacy groups, the ISCD, other clinical societies and physicians, Medicare has sent the Practice Expense portion of DXA reimbursement back to the AMA's Relative Value Update Committee (RUC) for reevaluation. ISCD and other clinical societies are currently responding to the AMA RUC with inputs that may alter the practice expense reductions and ultimately restore at least part of the cuts.

Additionally, the ISCD recently convened a teleconference involving members of our sister societies and other interested stakeholders to discuss strategies to deal with this crisis. As a result, a multi-society task force is being organized to investigate future initiatives. The task force will be examining legislative remedies, continuing dialogue with CMS and coordination of a grassroots and media campaign. Developing appropriate constructs for preventive screening and linking DXA to quality performance are also being examined. We will keep you posted on the developments of this task force.

I would like to take this opportunity to thank the members of the ISCD Public Policy Committee who have spent countless hours clarifying the complex issues surrounding DXA reimbursement. The efforts of Drs. Andrew Laster and Sanford Baim and Ms. Donna Fiorentino, JD, ISCD Public Policy Manager, in synthesizing and summarizing this issue and performing analyses of the impact of the DXA cuts have been nothing short of extraordinary.

In closing, it is my opinion that this is a battle we must win, as failure will reduce our patients' access to bone densitometry, adversely affect DXA quality and ultimately increase osteoporotic fractures with attendant personal and societal cost. We are determined to persevere because we truly care for our patients and understand how devastating this disease can be if not diagnosed and treated appropriately. Many of you have written letters to Congress and CMS in the recent months. Such efforts are essential and we will need your ongoing support in the coming days as we develop our future plans. We will do our best to keep you informed as this process moves forward and to notify you when action is required.

A handwritten signature in blue ink that reads "Neil Binkley". The signature is fluid and cursive, with the first name "Neil" being larger and more prominent than the last name "Binkley".

Neil Binkley, MD, CCD
ISCD President

Facility Accreditation

Facility Accreditation



Q: How will ISCD Facility Accreditation affect insurance reimbursement over the next four years?

A: In one of the first polls conducted by ISCD to determine the need for a Facility Accreditation Program, questions were raised as to whether the program's criteria for accreditation would satisfy insurance reimbursement criteria. Although this was putting the cart before the horse, since 2005, the Facility Accreditation Council has worked on developing the program with this issue in mind.

In 2005, MedPac (an independent federal entity created by Congress in 1997 to advise it on Medicare programs and costs) urged Congress to set certain standards for facilities. Below is a list of the standard areas identified by MedPac and how ISCD has covered these same areas in the Facility Accreditation Program.

MedPac Recommended Standards

Imaging Equipment
Staff Members
Image Quality
Physician & Patient Safety
Training
Education
Experience Requirements

ISCD Facility Accreditation Application: Essential Elements

Quality Control and Quality Assurance
Personnel
Acquisition and Analysis
Quality Control and Quality Assurance
Personnel
Personnel Education: Patient & Referring Physician
Personnel

In addition, the Facility Accreditation Program covers two equally important essential elements not mentioned in the MedPac recommendations:

- Scan Interpretation and Reporting
- Privacy, Business Ethics and Regulatory Requirements

In an effort to reduce costs through improved quality, some insurance providers "sift" applicants for reimbursement by profiling, credentialing and requiring attestation to the above standards within the entire facility.

Below is an example from the NIA (National Imaging Associates, the radiology benefits management company for BCBS) Privileging Application, October 19, 2006.

"IV. Attestation

I (we) hereby certify the following to be true:

- A. There are registered/certified technologists taking films at this location. Yes, No*
- C. This location has an established quality control program. Yes, No*
- D. This location has an established radiation safety program and ALARA program. Yes, No*
- G. This location prepares a written report for each imaging study performed. Yes, No*
- I. If performing bone densitometry, this location employs physicians or technologists who:
- Are certified by the ISCD
- Are in the process of becoming certified
- Have not begun the certification process"*

ISCD continues to work on behalf of DXA professionals to insure appropriate reimbursement and to raise the quality level of DXA acquisition and reporting. DXA facilities choosing to go through the process of ISCD Facility Accreditation will not only be ISCD accredited as a quality facility for three years, they will also be prepared if insurance reimbursement becomes dependent on criteria, i.e., BCBS/NIA criteria, requiring a third party credentialing program such as the ISCD's certification and accreditation programs.

With BCBS/NIA in mind, it would be prudent for DXA facilities to be prepared for what might be on the horizon.

How to Build a Standard Operating Procedure (SOP)

The Facility Accreditation Council will present a workshop on this topic at the 2007 Annual Meeting. All size facilities currently in operation or planning for future operations should attend.

Topics will include:

- Why have an SOP
- How to develop one from start to finish
- How to organize your existing SOP for accreditation
- What to avoid

- What to include
- Clarifying the Facility Accreditation Essential Elements
- Criteria for a good scan and the challenges

This session is open to Annual Meeting registrants at no additional fee. Limited seating is available, therefore pre-registration for this event is recommended.

Meeting registration is available online at www.ISCD.org

Medicare Finalizes Cuts to DXA and VFA

On November 1, 2006, The Centers for Medicare & Medicaid Services (CMS) released the final rule which will determine reimbursement for physician services for the next four years. CMS-1321-FC, Medicare Revisions to Payment Policies, Changes to Practice Expense Methodology under the Physician Fee Schedule (click to view CMS-1321) will dramatically cut reimbursement for DXA and VFA performed in the physician office setting and have a profound impact on the diagnosis and management of patients with osteoporosis.

Combined with the cuts to outpatient imaging procedures enacted under the Deficit Reduction Act, reimbursement for DXA will drop on January 1, 2007 by 40% from the current \$139.46 to \$82.33 and will plummet to \$35.48 when the fee schedule is fully implemented in 2010. This amounts to a 75% cut in DXA reimbursement. In January 2007, reimbursement for VFA will drop from \$39.41 to \$33.10. When fully implemented in 2010, reimbursement for VFA will be cut by 51% to \$19.13. A PowerPoint slideshow detailing reimbursement cuts for DXA and VFA is posted on our Web site (www.ISCD.org).

As the result of general housekeeping measures by the AMA's RUC, the CPT code for axial DXA will also change from 76075 to 77080 and VFA will change from 76077 to 77082. Congress acted in the closing days of the session to block the scheduled 5% SGR (Sustainable Growth Rate) cut. It appears that the 10% adjustment for budget neutrality that was tacked on to the physician work Relative Value Unit (RVU) has also been dropped.

Over the past few months, in an effort to overturn these cuts, the ISCD has taken the following actions:

- Filed two sets of formal comments with CMS in response to CMS rules 1512 and 1321 (ISCD comments to CMS 1512 and CMS 1321 are posted online);
- Created a survey nearly identical to the one used by the AMA Relative Value Update Committee (RUC), distributed it electronically to a broad representation of physicians in practice in coordination with AACE (Endocrinology), ASBMR, ACR (Rheumatology), TES (Endocrine Society), and NAMS (Menopause Society) and tabulated the results to determine appropriate work RVUs for DXA and VFA. Survey results were included in both sets of ISCD comments to CMS;
- Participated in a Refinement Panel Hearing called by CMS to contest changes in the physician work RVU;
- Called on key members of Congress in Washington;
- Met personally with CMS Administrator Dr. Mark McClellan, his successor Leslie Norwalk, and senior CMS staff;
- Participated in a second meeting with senior CMS staff to upgrade the Practice Expense RVU and discuss flaws in the Refinement Panel process;
- Recently convened a teleconference involving sister societies and interested stakeholders resulting in the format of a multi-society task force.

The ISCD is continuing to analyze the final rule, which is 1,418 pages in length. We will continue to work through the task force to restore reimbursement to appropriate levels. We will continue to keep you informed of our efforts and new developments as they occur.



REGISTER NOW!

ISCD 2007 Annual Meeting

March 14-17, 2007

Meeting Details Available Online

www.ISCD.org

Education

As the world leader in bone densitometry certification, the **International Society for Clinical Densitometry (ISCD)** provides comprehensive education courses in bone densitometry and offers certification for those who perform DXA scans and those who interpret the results.

BONE DENSITOMETRY COURSE

The program is divided into two courses. The Clinician Course is open to clinicians, nurse practitioners, physician assistants, DOs, and PhDs who interpret and report on DXA scans. The Technologist Course is open to RTs and other healthcare professionals who perform DXA scans. The Course equips clinicians and technologists with the knowledge to properly run a bone densitometry center and interpret DXA scans. The core elements of the program provide a set of standard practices and information to raise the level of awareness and education in bone densitometry. The Course emphasizes central DXA testing, but also provides information on other forms of bone mass measurement, including peripheral DXA and QCT.

CLINICIAN COURSE OBJECTIVES

After attending the Course, participants will be better prepared to:

- Identify the technique, safety and limitation of DXA scanning
- Explain the value of utilizing bone densitometry to assess and monitor fracture risk
- Summarize quality assurance and calculation of precision of a DXA site
- Apply the principles of DXA scan interpretation in reporting

TECHNOLOGIST COURSE OBJECTIVES

After attending the Course, participants will be better prepared to:

- Identify the technique, safety and limitation of DXA scanning
- Explain the value of utilizing bone densitometry to assess and monitor fracture risk
- Apply knowledge of quality control and operation of DXA equipment
- Review patient preparation and proper positioning for DXA scanning
- Identify and perform proper scan acquisition and analysis

CLINICIAN COURSE: CME CREDIT

The University of Cincinnati College of Medicine designates this educational activity for a maximum of 12 AMA PRA Category 1 Credit(s)[™]. Physicians should

only claim credit commensurate with the extent of their participation in the activity.

TECHNOLOGIST COURSE: CE CREDIT

This Course qualifies for up to 12.5 Category A credits through the ASRT.

CLINICIAN COURSE FOR TECHNOLOGISTS

Technologists may attend the Clinician Course if gaining information about interpreting DXA scans would assist them with their job responsibilities. However, it is recommended that the Technologist Course be taken first.

This Course qualifies for up to 14 Category A credits through the ASRT.

ISCD CERTIFICATION

To become ISCD certified as a Certified Clinical Densitometrist (CCD) or Certified Densitometry Technologist (CDT), it is necessary to pass the Certification Exam. The Certification Exam is offered at each Bone Densitometry Course location (taking the course is optional). Remote testing is also available. For additional information or to request an application, e-mail ebaddeley@iscd.org. In addition, upon passing the exam, technologists are required to submit and pass scans as part of the certification process. ISCD Certification and Recertification is valid for five years.

VERTEBRAL FRACTURE ASSESSMENT COURSE

The ISCD Vertebral Fracture Assessment (VFA) Course is an advanced densitometry course that provides an overview of VFA technology. This new technology offers a significant advance in the diagnosis and management of patients at risk for osteoporotic fractures by allowing clinicians to identify and treat those who would not be recognized using a bone density test alone. The VFA Course is open to clinicians, technologists, scientists, researchers, and

healthcare providers who wish to learn more about VFA and its use.

VFA COURSE OBJECTIVES

After attending the Course, participants will be better prepared to:

- Recognize the clinical importance and radiographic diagnosis of vertebral fractures
- Compare x-ray and vertebral fracture assessment (VFA) methods for diagnosing vertebral fractures
- Describe how VFA should be performed, interpreted and reported
- List the indications for VFA testing

CME/CE CREDIT

The University of Cincinnati College of Medicine designates this educational activity for a maximum of 5 AMA PRA Category 1 Credit(s)[™]. Physicians should only claim credit commensurate with the extent of their participation in the activity.

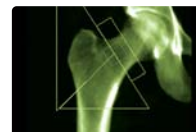
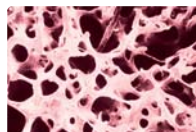
This Course qualifies for up to 6 Category A credits through the ASRT.

ACCREDITATION STATEMENT

These activities have been planned and implemented in accordance with the Essentials and Standards of the Accreditation Council for Continuing Medical Education through the joint sponsorship of the University of Cincinnati and International Society for Clinical Densitometry.

The University of Cincinnati College of Medicine is accredited by the Accreditation Council for Continuing Medical Education (ACCM) to sponsor continuing medical education for physicians.

The University of Cincinnati College of Medicine is committed to resolving all conflicts of interest issues which may arise as a result of prospective faculty members' significant relationships with drug or device manufacturer(s). Our mandate is to retain only those speakers with financial interest that can be reconciled with the goals and educational integrity of the program.



Course information available online at www.ISCD.org. On the **Upcoming Courses** page of our Web site you can find course dates, locations and registration details for 2006 & 2007 ISCD courses.

The screenshot shows the ISCD website interface. On the left, there is a vertical navigation menu with items: ABOUT ISCD, MEMBERSHIP, LEADERSHIP & COMMITTEES, CORPORATE PARTNERS, EDUCATION & CERTIFICATION, MEETINGS & EVENTS, PUBLICATIONS & PRODUCTS, RE-EMPLOYMENT, WEB SITE, OFFICIAL POSITIONING & AUTHORITY, FACILITY ACCREDITATION, PATIENT INFORMATION, and RESOURCES. The main content area is titled 'Education & Certification' and contains text about ISCD's educational offerings, a 'Membership' section, and 'Bone Densitometry Standards'. A red circle highlights the 'Upcoming Courses' link in the 'Education & Certification' section. On the right side, there is a search bar and a 'HIGH LIC' section with various links like 'REGULATORY CALL FOR MEMBERSHIP', 'NEW JCD ONLINE', 'LEGISLATIVE ALL TO ACTU...', 'OSTEOPOR MANAGEMENT HD', 'SESSION PRESEN...', 'FREQUENTLY QUESTIO...', 'LEAN SEMINAR INFORMATION', 'PRECISION ASSESSMENT RESOURCE', and 'ENR/CE LI...

Calendar of Events

2007

February 22-25

SMA 10th Annual Conference on Osteoporosis
Amelia Island, Florida
www.sma.org

February 23-24

ISCD Bone Densitometry Course (BDC) with SMA
Amelia Island, Florida

February 24

ISCD Vertebral Fracture Assessment Course (VFA) with SMA
Amelia Island, Florida

March 13-14

ISCD Bone Densitometry Course (BDC) with ISCD Annual Meeting
Tampa, Florida

March 14-17

ISCD Annual Meeting
The two-day Bone Densitometry Course will be held March 13-14
Vertebral Fracture Assessment Course will be held March 17
Tampa, Florida

March 17

ISCD Vertebral Fracture Assessment Course (VFA)
Following ISCD Annual Meeting
Tampa, Florida

March 28-31

Seventh European Congress on Clinical and Economic Aspects of Osteoporosis & Osteoarthritis (ECCEO7)
Porto, PORTUGAL
<http://porto.piettecommunication.com>

March 29-April 1

23rd Annual Rheumatology on the Beach (ROB)
Destin, Florida
www.rheumatologyonthebeach.com

April 1-2

ISCD Bone Densitometry Course (BDC) with ROB
Destin, Florida

April 22

ISCD Vertebral Fracture Assessment Course (VFA) with NOF Annual Meeting
Washington, DC

April 22-23

ISCD Bone Densitometry Course (BDC) with NOF Annual Meeting
Washington, DC

May 4

ISCD Vertebral Fracture Assessment Course (VFA)
Hartford, Connecticut

May 5

Bone Quality: From Bench to Bedside
ECTS Training Course Satellite to the 34th European Symposium on Calcified Tissues
Copenhagen, DENMARK
www.ectsoc.org

May 5-6

ISCD Bone Densitometry Course (BDC)
Hartford, Connecticut

May 5-9

34th European Symposium on Calcified Tissues
Copenhagen, DENMARK
www.ectsoc.org

May 18-22

5th International Conference on Bone and Mineral Research & 7th International Osteoporosis Symposium
Urumqi (Xinjiang), CHINA
www.china-osteofound.org

May 19-20

ISCD Bone Densitometry Course (BDC)
Atlanta, Georgia

May 19-20

ISCD Bone Densitometry Course (BDC)
Vancouver, British Columbia, CANADA

June 8

ISCD Vertebral Fracture Assessment Course (VFA)
Allentown, Pennsylvania

June 9-10

ISCD Bone Densitometry Course (BDC)
Allentown, Pennsylvania

June 20

1st ISCD Children Position Development Conference (Public Session)
Montreal, Quebec, CANADA

June 21-24

Fourth International Conference on Children's Bone Health
Montreal, Quebec, CANADA
www.iccbh4.org/

June 23-24

ISCD Bone Densitometry Course (BDC) with IBMS
Montreal, Quebec, CANADA

June 23-24

ISCD Bone Densitometry Course (BDC) with WI Bone Symposium
Madison, Wisconsin

June 24

ISCD Vertebral Fracture Assessment Course (VFA) with WI Bone Symposium
Madison, Wisconsin

June 24-29

International Bone and Mineral Society 17th Scientific Meeting
Montreal, Quebec, CANADA
www.ibms2007.com

July 3-5

Bone Research Society Annual Meeting (Formerly Bone & Tooth Society)
Aberdeen, UNITED KINGDOM
www.brsoc.org.uk

July 7-8

ISCD Bone Densitometry Course (BDC) with SMA Focus on Female Patient
Kiawah Island, South Carolina

July 9-13

SMA 18th Annual Focus on the Female Patient Conference
Kiawah Island, South Carolina
www.sma.org

July 21

4th ISCD Position Development Conference (Public Session)
Lansdowne, Virginia

July 22

ISCD Vertebral Fracture Assessment Course (VFA) with ISCD Position Development Conference
Lansdowne, Virginia

July 22-23

ISCD Bone Densitometry Course (BDC) with ISCD Position Development Conference
Lansdowne, Virginia

August 3-4

8th Annual Santa Fe Bone Symposium
Santa Fe, New Mexico
E-mail: moneil@iscd.org

August 5-6

ISCD Bone Densitometry Course (BDC) with Santa Fe Bone Symposium
Santa Fe, New Mexico

August 18-19

ISCD Bone Densitometry Course (BDC)
Omaha, Nebraska

August 24

ISCD Vertebral Fracture Assessment Course (VFA)
Memphis, Tennessee

August 25-26

ISCD Bone Densitometry Course (BDC)
Memphis, Tennessee

FUTURE ISCD ANNUAL MEETINGS

2008 March 12-15
San Francisco, California

2009 March 11-14
Orlando, Florida

Send notices to:

Jennifer Gentry
SCAN Upcoming Events
Fax: 860.586.7550
E-mail: jgentry@iscd.org

Membership

Renew Your ISCD Membership Dues

Dues renewal notices for 2007 were mailed out September 15 and are due by December 31, 2006. Renew your membership in a timely manner to continue receiving member benefits, including the *SCAN*[®] newsletter, without interruption. Effective January 1, 2007, dues amounts for most categories increase. Second notices for dues were sent out December 1, 2006 to all members via e-mail. Those members who do not have a valid e-mail address on file were mailed the notice on the same date. With 6,000 members, ISCD is a strong voice in the field of bone densitometry and is the only society in the world to represent both clinicians and densitometry technologists.

Renew by Mail

Take a few moments to review your notice upon receipt. Note any contact information changes directly on the invoice and remit with payment using the included self-addressed envelope. Dues payments go directly to our lockbox address in Boston, MA.

Renew Online

If paying by credit card, you can renew your membership online. From the main index on the Web site (www.ISCD.org), click on Membership, Online Membership Renewal, complete the form including payment information and click submit. If you log on to the Members Only section first, then go to the renewal form; it will be auto-filled with your data.

Frequently Asked Dues Questions

What period of time does my dues payment cover?

The ISCD's fiscal year is January 1 through December 31 and dues are not prorated. Renewing during the renewal period (September 1 through December 30), renews your membership through December 31 of the next year.

Are my ISCD annual dues tax deductible?

Dues to the ISCD are not deductible as a charitable contribution but may be deductible as an ordinary and necessary business expense.

What is the dues remittance address?

Dues payments *only* should be sent to the ISCD lockbox address in Boston: International Society for Clinical Densitometry (ISCD)
PO Box 847099
Boston, MA 02284-7099

All other types of payments (including combination payments of dues and other ISCD items/events) should be sent to the main ISCD address in West Hartford: ISCD, 342 North Main Street, West Hartford, CT 06117-2507

When should I pay my annual dues?

Dues should be paid as soon as possible after receiving the initial dues notice to ensure receiving membership benefits without interruption. If dues are unpaid after 90 days, member benefits will be suspended. You can renew your dues online anytime during the renewal period, even prior to receiving your printed dues notice.

What forms of payment are accepted?

ISCD accepts payment in US dollars with a personal check, business check, MasterCard, Visa or American Express. No other types of credit cards are accepted.

Can I pay my dues online?

Yes, the online dues renewal application is listed under the Membership tab on the ISCD Web site (www.ISCD.org).

If I no longer wish to remain a member, can I just ignore the statement?

We request that you "actively resign" by sending in a letter of resignation with a copy of your dues notice within 90 days of the first billing.

Where do I direct my dues renewal questions?

Contact our Membership Services Coordinator, iscd@iscd.org with dues renewal questions.

Why Be Involved?

ISCD is the only society in the world to represent both clinicians and densitometry technologists. ISCD is comprised of 6,000 clinicians, technologists and industry members.

ISCD is dedicated to the promotion of quality skeletal assessment through:

- Standard setting
- Continuing education programs
- Densitometry certification
- Supporting clinical and scientific advances in the field

ISCD membership provides:

- Valuable education
- Professional development tools
- Subscription to ISCD publications
- Inclusion in *Members Online*
- Access to Regional Representative System
- Opportunities to participate in leadership roles
- Being kept abreast of the latest industry news
- Powerful networking opportunities
- Members-only rates to ISCD events
- Members-only resources online



Renew Online
www.ISCD.org

JCD Online Access Information

JCD Online subscribers, which are also ISCD members, have two options for accessing JCD Online that can be used interchangeably.

- You can log in as a member on the ISCD Web site and then click the "JCD Online Subscriber Login" link on the Member Home page.
- OR**
- If you wish to personalize the JCD Online Web site, and have access to such features as Auto Login, Citation Alert, etc., you need to login directly on the www.clinicaldensitometry.org site. Note: There is a one-time registration process to complete on that site to set up your account (directions are available on the ISCD Web site or contact jgentry@iscd.org).

JCD Articles

The following articles were recently published in the Journal of Clinical Densitometry (JCD) Vol. 9, No. 4. If you have a Clinician membership or an upgraded or full Technologist, Associate or Retired membership, you have access to JCD Online.

If you have logon questions, contact Jennifer Gentry, jgentry@iscd.org or Nancy Gianetti, ngianetti@iscd.org.

JCD 9.4 Articles:

DXA Quality Matters

A Randomized Trial to Assess the Impact of Direct Reporting of DXA Scan Results to Patients on Quality of Osteoporosis Care

Standards and Measurements for Assessing Bone Health – Workshop Report Co-Sponsored by the International Society for Clinical Densitometry (ISCD) and the National Institute of Standards and Technology (NIST)

Race/Ethnicity and Fracture Risk Assessment: An Issue That Is More Than Skin Deep

What is the Number of Older Canadians Needed to Screen by Measurement of Bone Density to Detect an Undiagnosed Case of Osteoporosis? A Population-Based Study From CaMos

Differences of Vertebral Area in Serial Bone Density Measurements: A Common Source of Potential Error in Interpretation of BMD Change

Assessment of Femoral Neck Strength by 3-Dimensional X-ray Absorptiometry

Effects of Alendronate on Bone Mineral Density in Men with Prostate Cancer Treated with Androgen Deprivation Therapy

Caloric Expenditure in the Morbidly Obese Using Dual Energy X-ray Absorptiometry

Comparative Evaluation of Local and International Reference Databases for Forearm Densitometry: Different Impacts on Diagnostic Decisions

Bone Mineral Density of the Spine and Femur in Healthy Moroccan Women

Correlations Between Bone Mineral Density of the Hand and Other Skeletal Sites as Measured by DXA in Chinese Women and Men

Quantitative Ultrasound of the Calcaneus in Long-Term Liver or Cardiac Transplantation Patients

Prediction and Discrimination of Osteoporotic Hip Fracture in Postmenopausal Women (*Review Article*)

JCD Article Submissions

The *Journal of Clinical Densitometry* (JCD) is requesting papers for upcoming editions. All manuscripts should be submitted online at <http://ees.elsevier.com/jclindensitom>. If the manuscript must be submitted in print, send to the Editor-in-Chief: Paul D. Miller, MD, CCD, *Journal of Clinical Densitometry*, Colorado Center for Bone Research, 3190 S. Wadsworth Blvd., Suite 250, Lakewood, CO 80227; Tel: 303.679.0487, Fax: 303.679.0891. Contact the Managing Editor with any questions, E-mail: lmillerjcd@aol.com.

Manuscripts submitted in print need to be prepared as outlined on the Author Info page of the Journal Web site (www.clinicaldensitometry.org.)



July 21, 2007
Public Session
National
Conference
Center
 Lansdowne,
 Virginia, USA

In Memoriam

We are deeply saddened by the death of ISCD member, friend and colleague, **Gene Boling, MD**, of Claremont, CA. He was tragically killed in an automobile accident on November 22, 2006. Gene was 56 years old.

ISCD Certification

ISCD's certification process is designed to identify Clinicians (MDs, DOs, Nurse Practitioners, Physician Assistants, Fellows and PhDs) and Technologists (RTs and other allied healthcare providers) who possess the mastery of a body of knowledge developed by topic experts in the field.

Clinicians: The term "Certified Clinical Densitometrist (CCD)" represents anyone who interprets a bone densitometry examination per reimbursement requirements—not as patient education. Successful completion of the ISCD written exam

results in a five-year CCD certification. The exam is closed-book and consists of 75 questions.

Technologists: The term "Certified Densitometry Technologist (CDT)" represents anyone who performs central bone densitometry—lumbar spine and proximal femur scans. Successful completion of the closed-book, 50-question written exam as well as submission of accurate patient and phantom scans will result in a five-year CDT certification.

The Importance of Recertification

ISCD Certification lends assurance to patients and payers that an individual has achieved a certain level of competence. By using limited-term certifications, ISCD assures that the certification holders have met the ISCD competency criteria and continue to keep their skills up-to-date.

Recertify by Application

- ▶ Submit your completed Recertification Application (with the required 35 CME/CEs following the Recertification Guidelines, prior to your certification expiration date. You will receive a new certificate valid for five years from your current expiration date.
- ▶ A Recertification Application with Guidelines is available at www.ISCD.org

Recertify by Exam

- ▶ The ISCD Certification Exam is offered at regularly scheduled **Bone Densitometry Courses sites**. A list of Upcoming Courses is available at www.ISCD.org.
- ▶ Remote testing is available
- ▶ Taking the ISCD Course is optional

For further information e-mail ebaddeley@iscd.org

NOW AVAILABLE ISCD Remote Testing Recertify or Retest

- ▶ Take the ISCD Certification Exam at a location *near* you
- ▶ Pick a time that is *convenient* for you

Print an application from the Web site
Click on "Remote Testing" in the Highlights column of the site.

www.ISCD.org

Recertification Tips

Monitor your certification.

Check the expiration date of your certification on the bottom of your certificate or on the ISCD Certification Registry at www.ISCD.org.

Be prepared.

Review the Recertification Guidelines on the ISCD Web site so that you are aware of the process. Plan ahead so you have time to acquire the necessary continuing educational credits.

Recertify in advance.

Submit an application before your certification expires. You can submit your application up to six months in advance of your expiration date. Your certification will be renewed for a period of five years from its expiration date. Waiting increases the possibility of missing the renewal deadline.

Where can I get CME/CEs? ISCD Courses

All ISCD Courses count toward ISCD recertification

- Bone Densitometry Courses
- Vertebral Fracture Assessment Courses

ISCD Annual Meetings

- 2007 – March 14-17 - Tampa, Florida – USA
- 2008 – March 12-15 - San Francisco, California – USA
- 2009 – March 11-14 - Orlando, Florida – USA

Online CME/CE Links

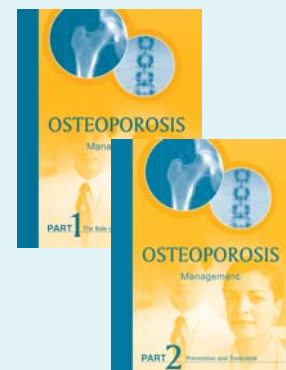
- Resources section of the ISCD Web site
It is not intended to be a complete list, but it will assist you in identifying continuing education opportunities.

**CE Credits
Now Available!**

OSTEOPOROSIS MANAGEMENT MONOGRAPHS

PART 1 The Role of Bone Densitometry
PART 2 Prevention and Treatment

Credits applicable toward ISCD Recertification
Order online through the ISCD BoneYard



ISCD Volunteer Leadership

EXECUTIVE COMMITTEE (2006-2007)

OFFICERS

President

Neil C. Binkley, MD, CCD - 2007
University of Wisconsin Osteoporosis
Research Program
Madison, WI
nbinkley@facstaff.wisc.edu

President-Elect

David L. Kendler, MD, CCD - 2007
Vancouver, BC, CANADA
kendler@ca.inter.net

Vice-President

Sanford Baim, MD, CCD - 2007
Rheumatic Disease Center
Glendale, WI
sanfordbaim@sbcglobal.net

Treasurer

Elliott N. Schwartz, MD, CCD - 2007
Northern California Institute for Bone
Health, Inc.
Oakland, CA
eschwartzmd@betterbones.org

Secretary

Bennié L. Leverich, RN, CDT - 2007
Orthopaedic Assoc. of Bethlehem
Bethlehem, PA
bonesrn@yahoo.com

Immediate Past-President

Steven M. Petak, MD, JD, CCD - 2007
Texas Institute for Reproductive Medicine
and Endocrinology
Houston, TX
petak@texas.net

BOARD OF DIRECTORS (2006-2007)

Gerald Avery, RT(R)(N), CDT - 2009
Clarian Health
Indianapolis, IN
gavery12@comcast.net

Donald M. Bachman, MD, CCD - 2007
MetroWest Medical Center
Framingham, MA
donald.bachman@mwmc.com

JoAnn P. Caudill, RT(R)(M)(BD), CDT -
2008
Greater Baltimore Med. Ctr. -
Osteoporosis & DEXA Services
Baltimore, MD
dexajo@comcast.net

Gary W. Edelson, MD, CCD - 2008
Sinai - Grace Hospital
Detroit, MI
gwedoc@comcast.net

Didier Hans, MD, CCD - 2009
Geneva University Hospital
Geneva, SWITZERLAND
dhans@iprolink.ch

Akira Itabashi, MD, PhD, CCD - 2008
Saitama Medical School
Moroyama, Saitama, JAPAN
akira_it@saitama-med.ac.jp

Gary M. Kiezbak, PhD, CCD - 2007
St. Luke's Episcopal Hospital
Houston, TX
gkiezbak@slsh.com

Andrew J. Laster, MD, CCD - 2008
Arthritis & Osteoporosis Consultants
Charlotte, NC
ajlaster@aocc.md

Roman S. Lorenc, MD, PhD, CCD - 2008
Specjalistyczny Ośrodek Medycyny Wiek
Warsaw, POLAND
biochemia@czd.pl

Marjorie Luckey, MD, CCD - 2008
St. Barnabas Osteoporosis Center
Livingston, NJ
luckbend@aol.com

Sergio Ragi-Eis, MD, CCD - 2008
Ortopedia Doencas Osteometabolicas
Vitoria, ES, BRAZIL
seragi@cedoes.com.br

Bradford J. Richmond, MD, CCD - 2009
Cleveland Clinic Foundation
Cleveland, OH
richmob@ccf.org

James A. Simon, MD, CCD - 2009
George Washington University
Washington, D.C.
jasimon@erols.com

Christine Simonelli, MD, CCD - 2008
HealthEast Clinics
Woodbury, MN
msciao@comcast.net

Tamara J. Vokes, MD, CCD - 2009
University of Chicago
Chicago, IL
tvokes@uchicago.edu

EX OFFICIO

Chair, Education Council
S. Bobo Tanner, MD, CCD
Vanderbilt University
Nashville, TN
bobo.tanner@vanderbilt.edu

Editor, Journal of Clinical Densitometry
Past President
Paul D. Miller, MD, CCD
Colorado Center for Bone Research
Lakewood, CO
millerccbr@aol.com

Chair, Scientific Advisory Committee
Past President
E. Michael Lewiecki, MD, CCD
New Mexico Clinical Research and
Osteoporosis Center
Albuquerque, NM
lewiecki@aol.com

Chair, Publications Committee
Diane L. Schneider, MD, CCD
La Jolla, CA
drl@san.rr.com

Chair, Certification Council
Aliya Khan, MD, CCD
Oakville Bone Center
Oakville, ON, CANADA
avkhan@aol.com

Past Presidents

Nelson B. Watts, MD, CCD
University of Cincinnati
Cincinnati, OH
nelson.watts@uc.edu

John P. Bilezikian, MD, CCD
College of Physicians & Surgeons
New York, NY
jpb2@columbia.edu



2006-2007 Board of Directors

COMMITTEE CHAIRS (2006-2007)

Awards Committee
Corporate Advisory Council
David Kendler, MD, CCD

Certification Council
Aliya Khan, MD, CCD

Communications Committee
Nominating Committee
E. Michael Lewiecki, MD, CCD

Education Council
S. Bobo Tanner, MD, CCD
Vice-Chair, Ed Leib, MD, CCD

**Clinician Bone Densitometry
Course Committee**
Jan M. Bruder, MD, CCD

**Technologist Bone Densitometry Course
Committee**
Rogene Tesar, PhD, CCD, CDT
Gerald Avery, RT(R)(N), CDT

**Vertebral Fracture Assessment Course
Committee**
Susan Broy, MD, CCD

**Introduction to Densitometry Course
Committee**
Christopher Shuhart, MD, CCD
Jill Vargo, MD, CCD

**Annual Meeting (2007) Program
Committee**
Carol Zapalowski, MD, PhD, CCD
Diane C. Krueger, CDT
Joao Lindolfo C. Borges, MD, CCD

Ethics Committee
Nelson B. Watts, MD, CCD

Faculty Committee
Ed Leib, MD, CCD
Vice-Chair, Anita Colquhoun, RT, CDT

International Relations Committee
David L. Kendler, MD, CCD

Asia-Pacific Panel
Richard Prince, MD, CCD

Canadian Panel
David A. Hanley, MD, CCD

Iberian-American Panel
Sergio Ragi-Eis, MD, CCD

Grant Review Committee
Larry Jankowski, CDT

Membership Committee
Miriam F. Delaney, MD, CCD

Public Policy Committee
Andrew J. Laster, MD, CCD

Publications Committee
Diane L. Schneider, MD, CCD

Fracture Risk Task Force
JCD Editor-in-Chief
Paul D. Miller, MD, CCD

Web Site Content Committee
Paul G. Rochmis, MD
Vice-Chair, John Carey, MD, CCD

Scientific Advisory Committee
E. Michael Lewiecki, MD, CCD

Facility Accreditation Council
Elliott N. Schwartz, MD, CCD

**Standards of Bone Measurement
Committee**
John A. Shepherd, PhD, CCD

Positions Committee
Sanford Baim, MD, CCD

SCAN® EDITORS

Kathy Diemer, MD
Washington University School of Medicine
St. Louis, MO
diemer@msnotes.wustl.edu

Larry Jankowski, CDT
Illinois Bone and Joint Institute, Ltd
Morton Grove, IL
larrycdt@aol.com

SHOP THE ISCD BONEYARD on our Web site for ISCD logo products.



- ▶ CCD & CDT Lapel Pins
- ▶ ISCD Member Lapel Pins
- ▶ T-shirts and Polo shirts (limited supply - L & XL only)
- ▶ Books

Coding and Reimbursement Questions?

Visit the ISCD's Reimbursement Web Site at www.ISCD.org

International Society for Clinical Densitometry

We need your updated information...

Copy this page and send to: **ISCD, 342 North Main Street, West Hartford, CT 06117-2507** or fax to **860.586.7550**.

(PLEASE PRINT OR TYPE)

Dr. Mr. Ms. Other _____

(First/Given Name) (M.I.) (Last/Family Name) (Degree)

(Position) (Area of Specialty)

(Institution/Firm)

(Business Address)

(Business Address)

(City) (State/Province) (Country) (Zip/Postal Code)

(Business Phone #) (Business Fax #)

(E-mail)

Members Online
Check it out!
www.ISCD.org

SCAM® Newsletter consists of views expressed by individual authors – and hence are not necessarily those of the International Society for Clinical Densitometry. ISCD is a non-profit medical, scientific and professional society that seeks to link multiple disciplines into an international organization dedicated to clinical and educational aspects of bone densitometry – while remaining industry neutral. SCAM® is a registered trademark of the ISCD.

ISCD Headquarters
International Society for
Clinical Densitometry
342 North Main Street
West Hartford, CT 06117-2507
Phone: 860.586.7563
Fax: 860.586.7550
E-mail: iscd@iscd.org
Web site: www.ISCD.org


THE INTERNATIONAL SOCIETY
FOR CLINICAL DENSITOMETRY

NONPROFIT ORG.
US POSTAGE
PAID
HARTFORD, CT
PERMIT NO. 2115